



Winchester P&R Study





Average journey lengths:
 27.5 km to the City Centre,
 26.8 km to the P&R,
 Reduction of 0.7 km per
 intercepted car journey.

However traffic levels throughout Winchester similar over the last 17 years:

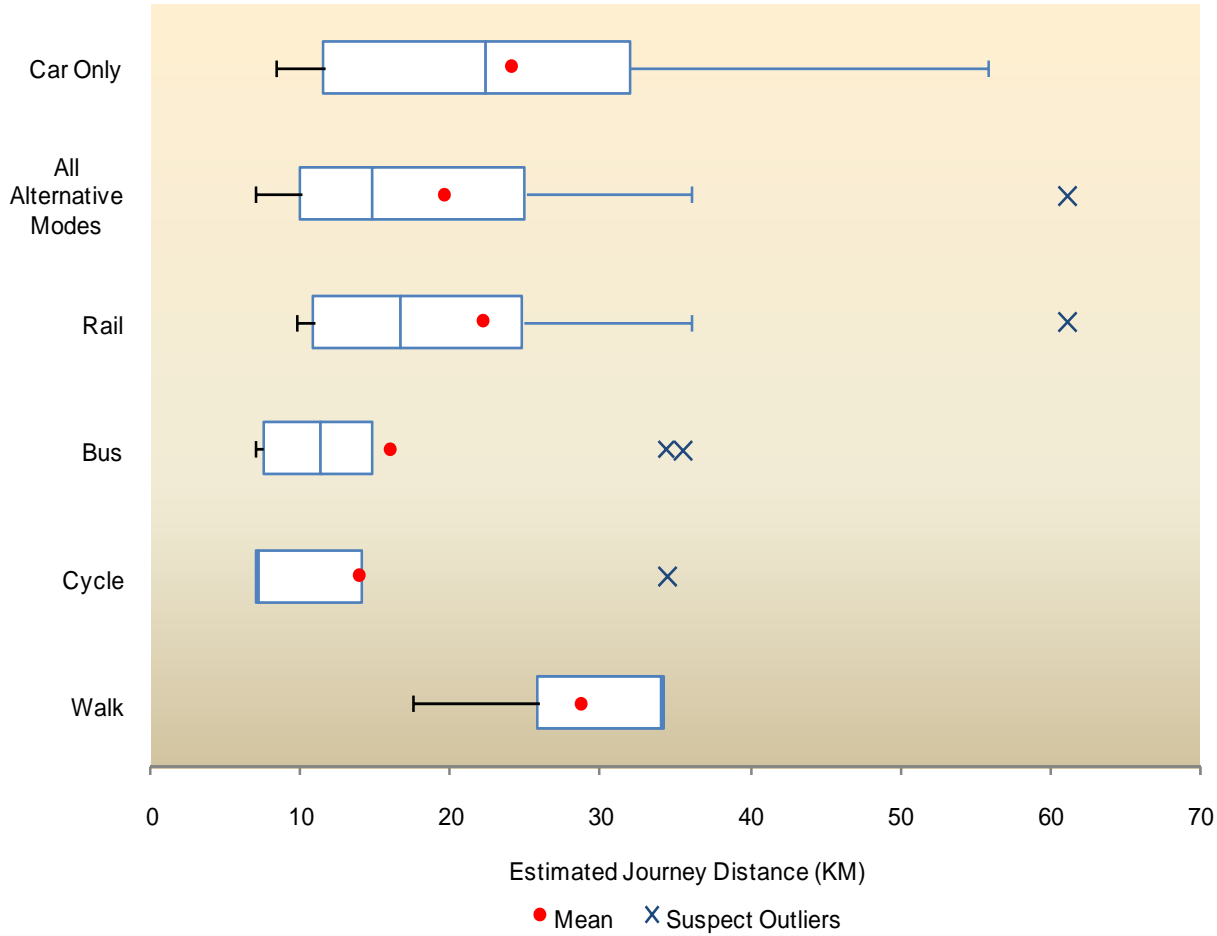
- Net new trips
- Induced traffic
- Abstraction from PT



33% of P&R users stated that they would have travelled via more 'conventional' public transport



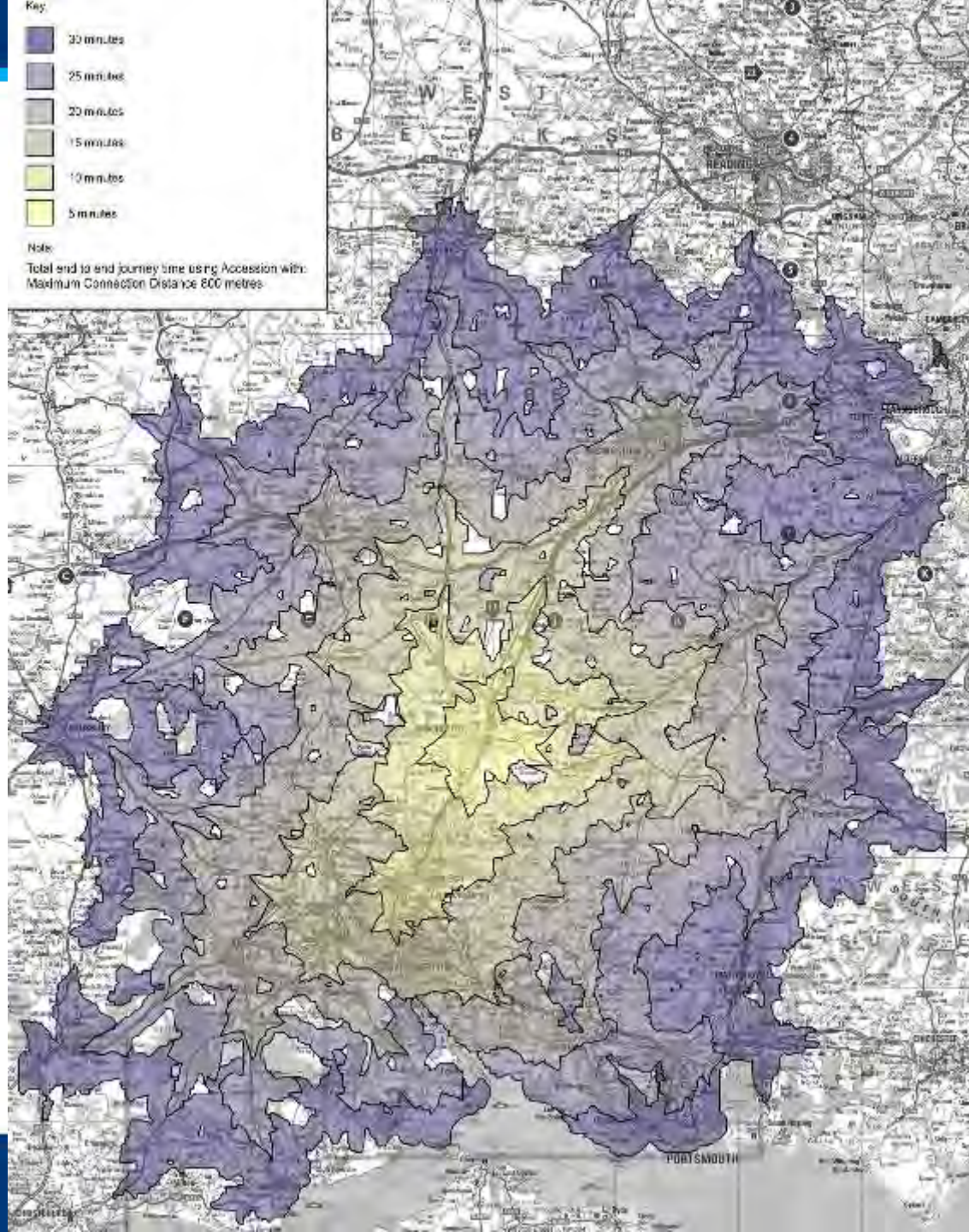
How respondents would have travelled against Journey Lengths





Areas of Access to the City Centre within 45 minutes via P&R

Percentage of Park and Ride Users within a 45 minute journey of the City Centre = **89%**



RPS

Areas within a Five Minute Car Journey of Long Link Bus Stops

Percentage of P&R Users within 45 minutes of the City Centre =

58%

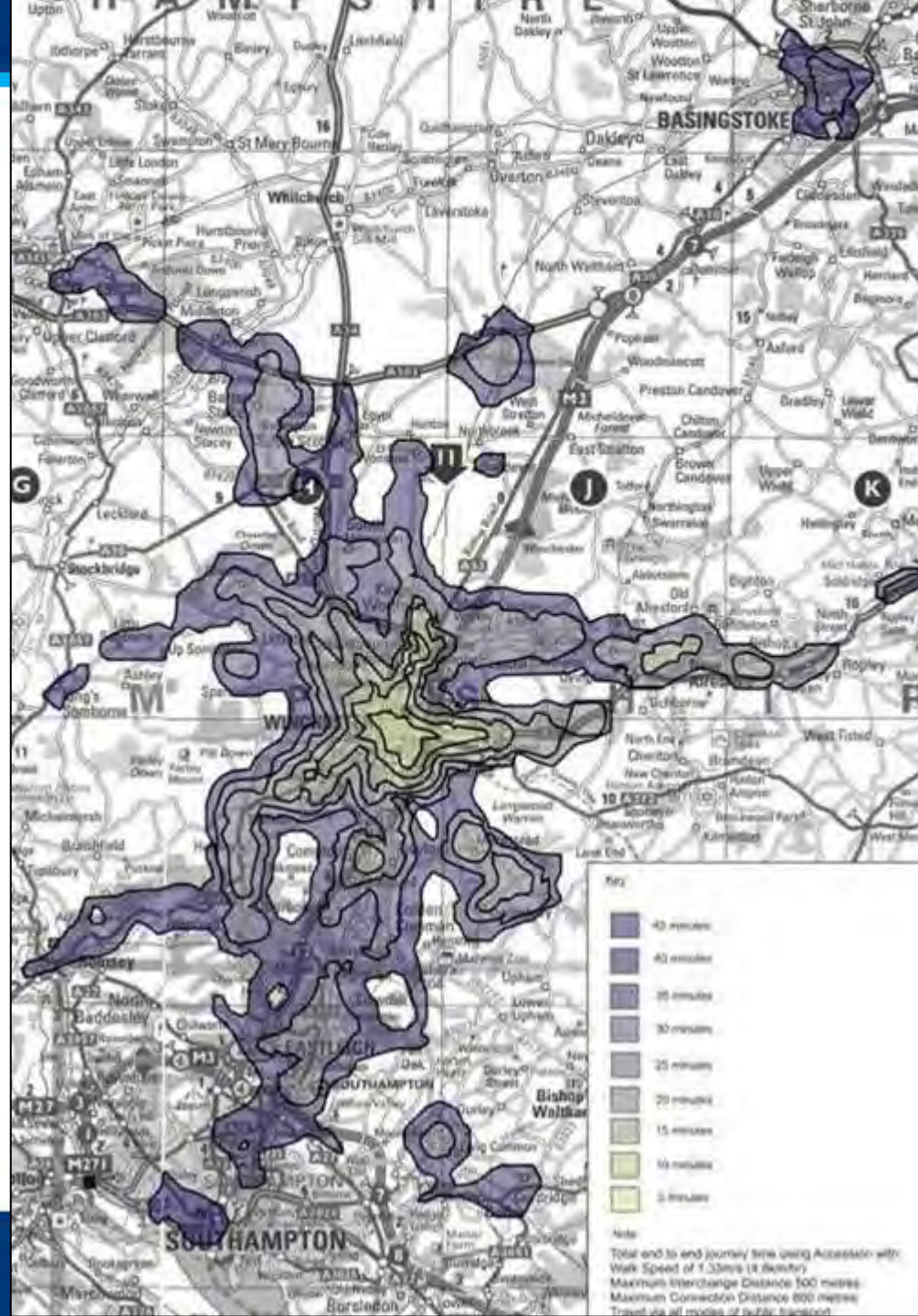


RPS

Access to Winchester City Centre within 45 minutes via Public Transport

Percentage of Existing P&R Users within a 45 minute Public Transport Journey =

31%



Comparison of Access via Different Schemes

	<i>Scheme</i>	<i>Max. Journey to City Centre</i>	<i>Estimated Workforce Population</i>
Existing Situation	St Catherines P&R (by car)	45 minutes	699,165
	Cycling	25 minutes	33,349
	Public Transport	45 minutes	159,493
Potential Alternative Schemes	Walk and Cycle/Ride	35 minutes *	29,176
	Long Link Park and Ride	45 minutes	204,507

Source: 2001 Census Data Workplace Population UV75

* (25 minutes walk and 10 minutes cycle/bus)

Ratings for Measures to Reduce Car Use

